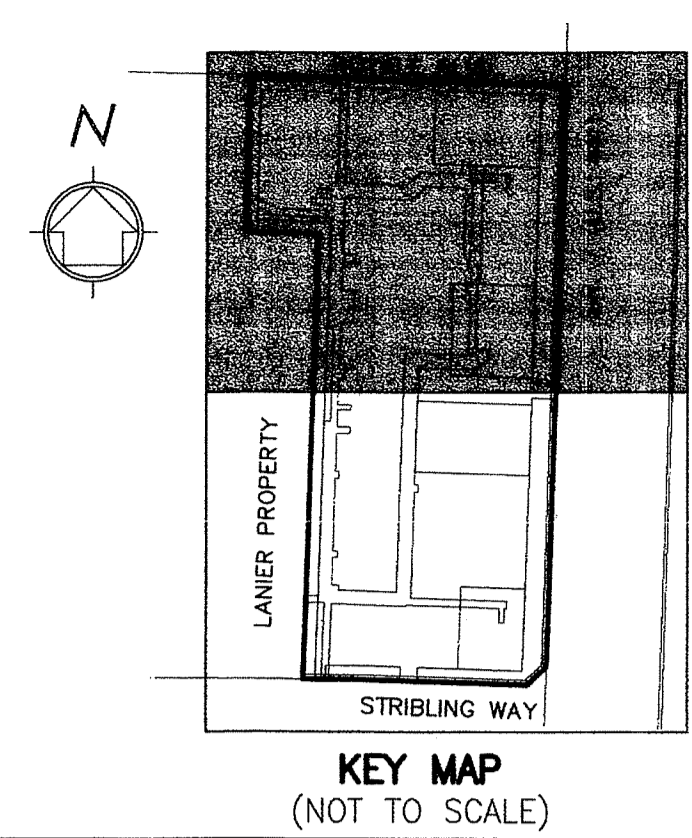


# VILLAGE GREEN CENTER REPLAT

LYING IN SECTION 13, TOWNSHIP 44 SOUTH, RANGE 41 EAST, VILLAGE OF WELLINGTON, PALM BEACH COUNTY, FLORIDA, BEING A REPLAT OF VILLAGE GREEN CENTER, AS RECORDED IN PLAT BOOK 115, PAGES 153 THROUGH 155, PUBLIC RECORDS OF PALM BEACH COUNTY, FLORIDA.



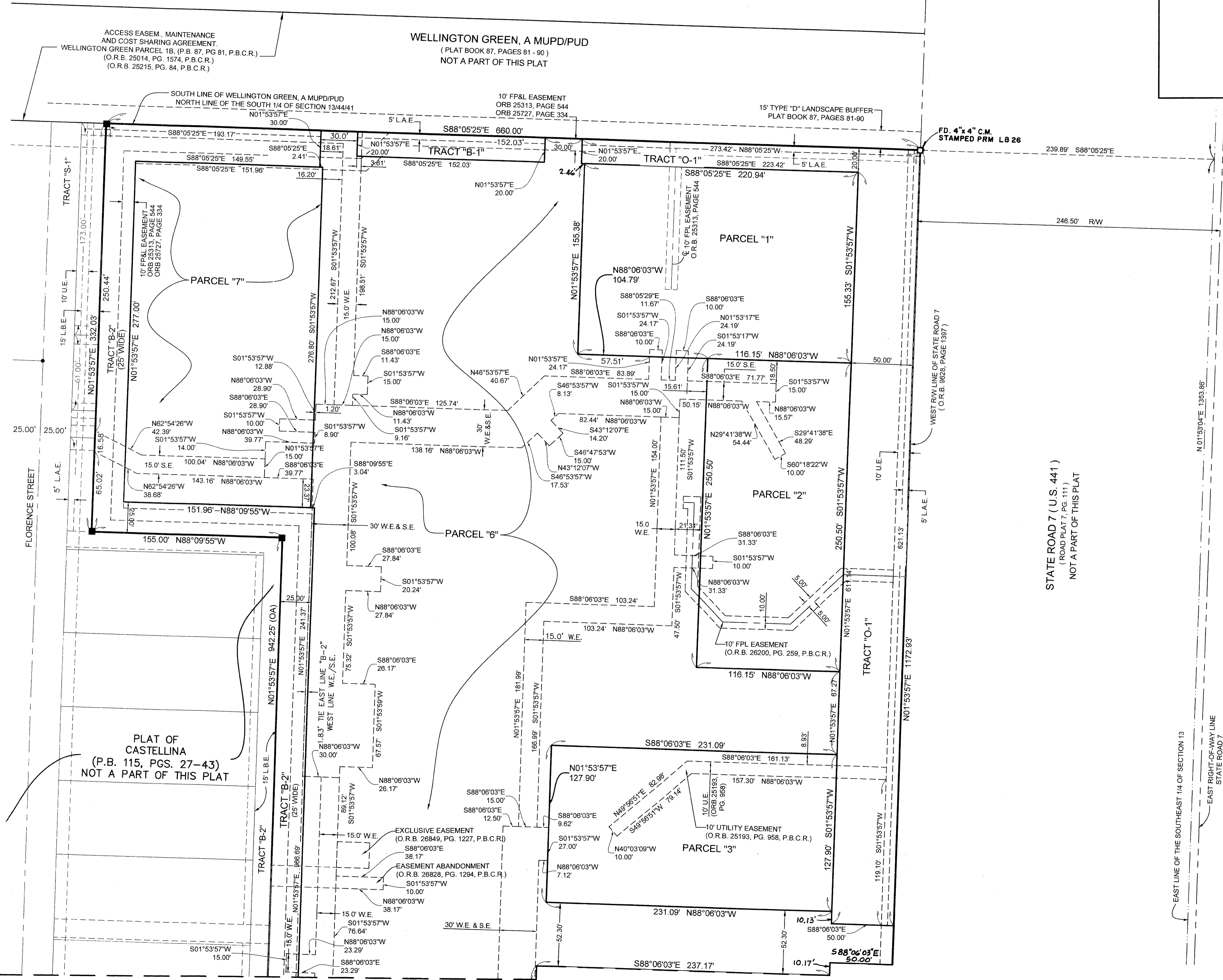
147

COUNTY OF PALM BEACH )  
STATE OF FLORIDA ) SS

THIS PLAT WAS FILED FOR RECORD AT \_\_\_\_\_ M. THIS \_\_\_\_\_ DAY OF \_\_\_\_\_, 2015, AND DULY RECORDED IN PLAT BOOK NO. \_\_\_\_\_ ON PAGE \_\_\_\_\_ THRU \_\_\_\_\_

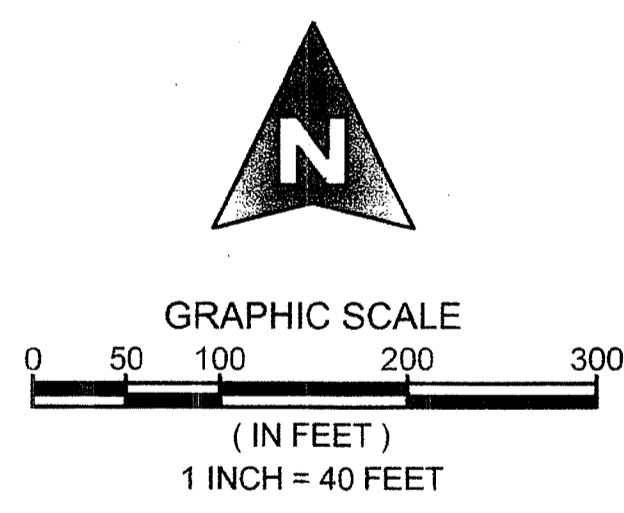
SHARON R. BOCK,  
CLERK AND COMPTROLLER

BY: \_\_\_\_\_, D.C.



**AREA TABULATION**

TRACT "O-1"	0.827 ACRES
TRACT "O-2"	0.830 ACRES
TRACT "B-1"	0.070 ACRES
TRACT "B-2"	0.923 ACRES
TRACT "B-3"	0.102 ACRES
PARCEL "1"	0.788 ACRES
PARCEL "2"	0.668 ACRES
PARCEL "3"	0.679 ACRES
PARCEL "4"	1.183 ACRES
PARCEL "5"	0.537 ACRES
PARCEL "6"	8.327 ACRES
PARCEL "7"	0.968 ACRES
<b>TOTAL</b>	<b>15.899 ACRES</b>



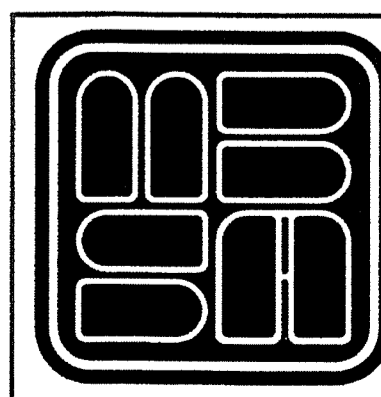
PLAT OF CASTELLINA  
(P.B. 115, PGS. 27-43)  
NOT A PART OF THIS PLAT

WELLINGTON GREEN, A MUPD/PUD  
(PLAT BOOK 87, PAGES 81-90)  
NOT A PART OF THIS PLAT

STATE ROAD 7 (U.S. 441)  
(ROAD PLAT 7, PG. 111)  
NOT A PART OF THIS PLAT

MATCH LINE SHEET 3

SHEET 2 OF 3



**MICHAEL B. SCHORAH & ASSOCIATES, INC.**  
1850 FOREST HILL BLVD., SUITE 206  
WEST PALM BEACH, FLORIDA 33406  
EB# 2438 TEL. (561) 968-0080 FAX. (561) 642-9726 LB# 2438

VILLAGE GREEN CENTER REPLAT

Z:\Village Green Center 13\1317\_REPLAT.dwg, 8/3/2015 11:25:37 AM, Leslie